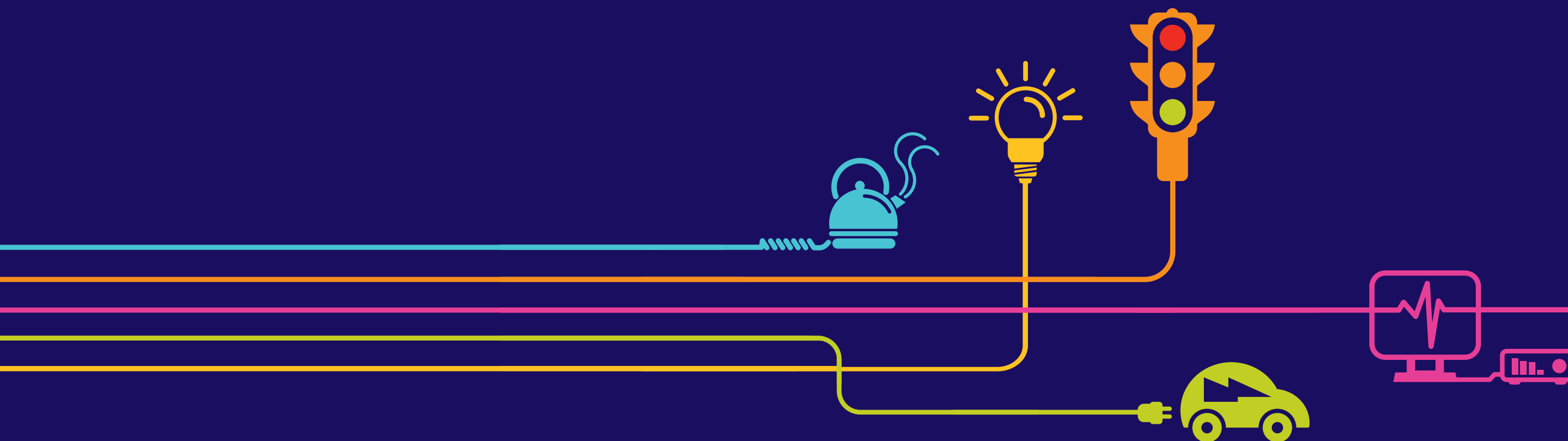


Environmental Statement Project Need and Alternatives Figures 2.1 to 2.3

Hinkley Point C Connection Project

*Regulation 5(2)(a) of the Infrastructure Planning
(Applications: Prescribed Forms and Procedure)
Regulations 2009*



Environmental Statement

Hinkley Point C Connection Project

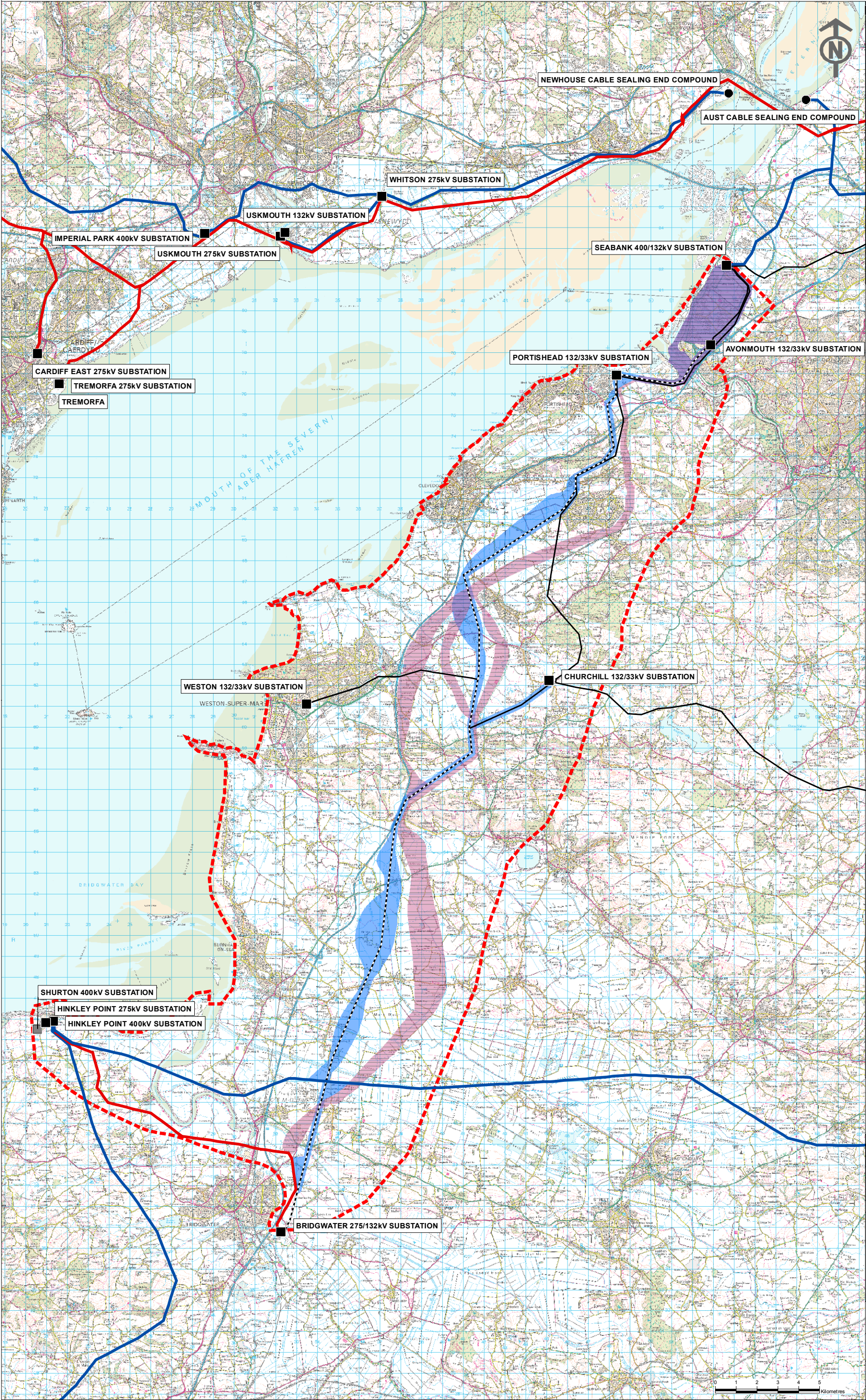
5.2.3 – Project Need and Alternatives – Figures (orange highlight indicates the contents of this Volume)

Figure	Title
Volume 5.2.3.1	
2.1	Study Area and Route Corridors
2.2	Preferred Route Corridor
2.3	Sections Considered in the Connections Options Report
Volume 5.2.3.2	
2.4	Connections Options Report Route Alignments and Hinkley Line Entries Draft Alignment Options
Volume 5.2.3.3	
2.5	Connections Options Report – Draft Route
2.6	Cable Sealing End Compound Sites – Bridgwater Tee Options
2.7	Cable Sealing End Compound Sites Considered South and North of the Mendip Hills Area of Outstanding Natural Beauty
2.8	Substation Siting Study Area
2.9	AT Route Connection Study Area, Route Corridors, Preferred Route Corridor and Preferred Alignment
2.10	Churchill, W and Y Route Options
2.11	N Route Options into Sandford Substation
Volume 5.2.3.4	
2.12	W Route Options
2.13	W Route Preferred Option
2.14	The Proposed Development (Preliminary Environmental Information Report)
Volume 5.2.3.5	
2.15	Section A Horsey Level to Woolavington Level
2.16	Section A Bridgwater Tee Cable Sealing End Compound
2.17	Section B Mark and Southwick
2.18	Section B Tarnock
2.19	Section D Sandford to Puxton
2.20	Section D Southwest of Nailsea
2.21	Section D West of Nailsea
2.22	Section E Tickenham Ridge
2.23	Section F M5 to Portishead Substation
2.24	Portishead Substation
2.25	Section G River Avon Crossing
2.26	Section G River Avon Crossing
2.27	Section G Avonmouth
2.28	Section G Avonmouth
2.29	Section G Severnside
2.30	Section G Seabank

Figure 2.1 – Study Area and Route Corridors

NATIONAL GRID (HINKLEY POINT C CONNECTION PROJECT)
ENVIRONMENTAL STATEMENT
VOLUME 5.2.3

STUDY AREA AND ROUTE CORRIDORS



Key

Study Area

- Hinkley Point C Connection Project - Study Area

Route Corridor Options

- Route Corridor 1
- Route Corridor 2
- Shared Route Corridor

Existing Infrastructure

- Existing 400kV Overhead Line
- Existing 275kV Overhead Line
- Existing Western Power Distribution Overhead Line
- Existing Western Power Distribution 132kV Overhead Line for Removal (Option 1A)
- Existing Substation
- Existing Cable Sealing End Compound

Consented Infrastructure

- Shurton 400kV Substation

Notes
This map includes data from the following sources:
- National Grid
- Ordnance Survey

This map is based upon Ordnance Survey material with the permission of Ordnance Survey on behalf of the Controller of Her Majesty's Stationery Office © Crown copyright. Unauthorised reproduction infringes Crown copyright and may lead to prosecution or civil proceedings.
Licence No. 100024241 2014.
Contains Ordnance Survey data © Crown copyright and database right 2014.

Title
NATIONAL GRID (HINKLEY POINT C CONNECTION PROJECT)
ENVIRONMENTAL STATEMENT
VOLUME 5.2.3
STUDY AREA AND ROUTE CORRIDORS


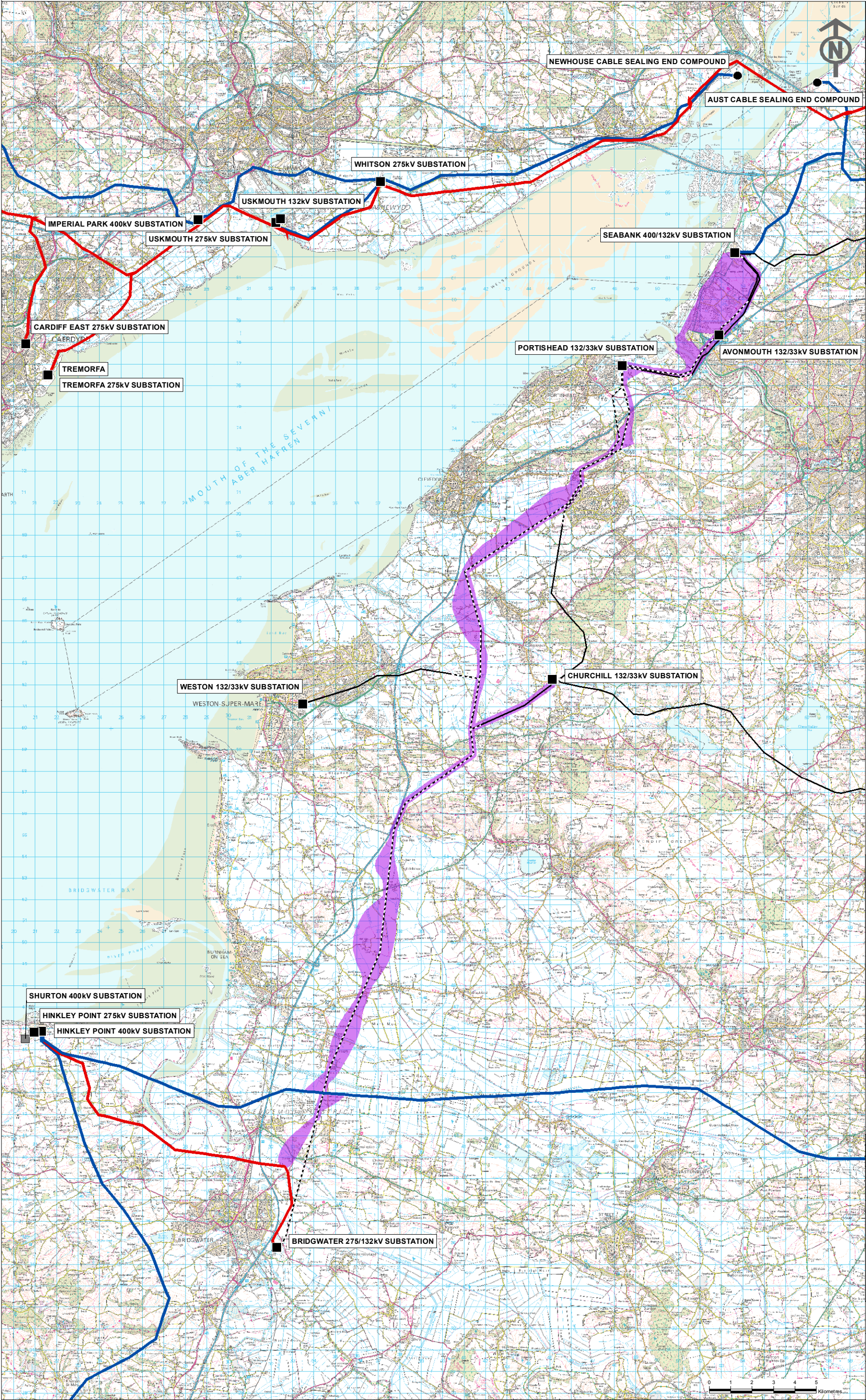
			
National Grid plc, Watlington Technology Park, Watlington, Oxford, OX10 8DA			
<u>NG INVESTMENT No.</u> 20897	<u>APPLICATION No.</u> EN020001		<u>GIS</u> A3
<u>FIGURE No.</u> 2.1	<u>DRAWING No.</u> G1979.2413B	<u>SCALE</u> 1:175,000	<u>ISSUE</u> A
SHEET 1 OF 1			

Figure 2.2 – Preferred Route Corridor

NATIONAL GRID (HINKLEY POINT C CONNECTION PROJECT)
ENVIRONMENTAL STATEMENT
VOLUME 5.2.3

PREFERRED ROUTE CORRIDOR



SITE MAP



Key

- Proposed Infrastructure**
- Preferred Route Corridor
- Existing Infrastructure**
- Existing 400kV Overhead Line
 - Existing 275kV Overhead Line
 - Existing Western Power Distribution Overhead Line
 - Existing Western Power Distribution 132kV Overhead Line for Removal
 - Existing Substation
 - Existing Cable Sealing End Compound
- Consented Infrastructure**
- Shurton 400kV Substation

Notes
This map includes data from the following sources:
- National Grid
- Ordnance Survey

This map is based upon Ordnance Survey material with the permission of Ordnance Survey on behalf of the Controller of Her Majesty's Stationery Office © Crown copyright. Unauthorised reproduction infringes Crown copyright and may lead to prosecution or civil proceedings. Licence No. 100024241 2014. Contains Ordnance Survey data © Crown copyright and database right 2014.

Title
NATIONAL GRID (HINKLEY POINT C CONNECTION PROJECT)
ENVIRONMENTAL STATEMENT
VOLUME 5.2.3
PREFERRED ROUTE CORRIDOR


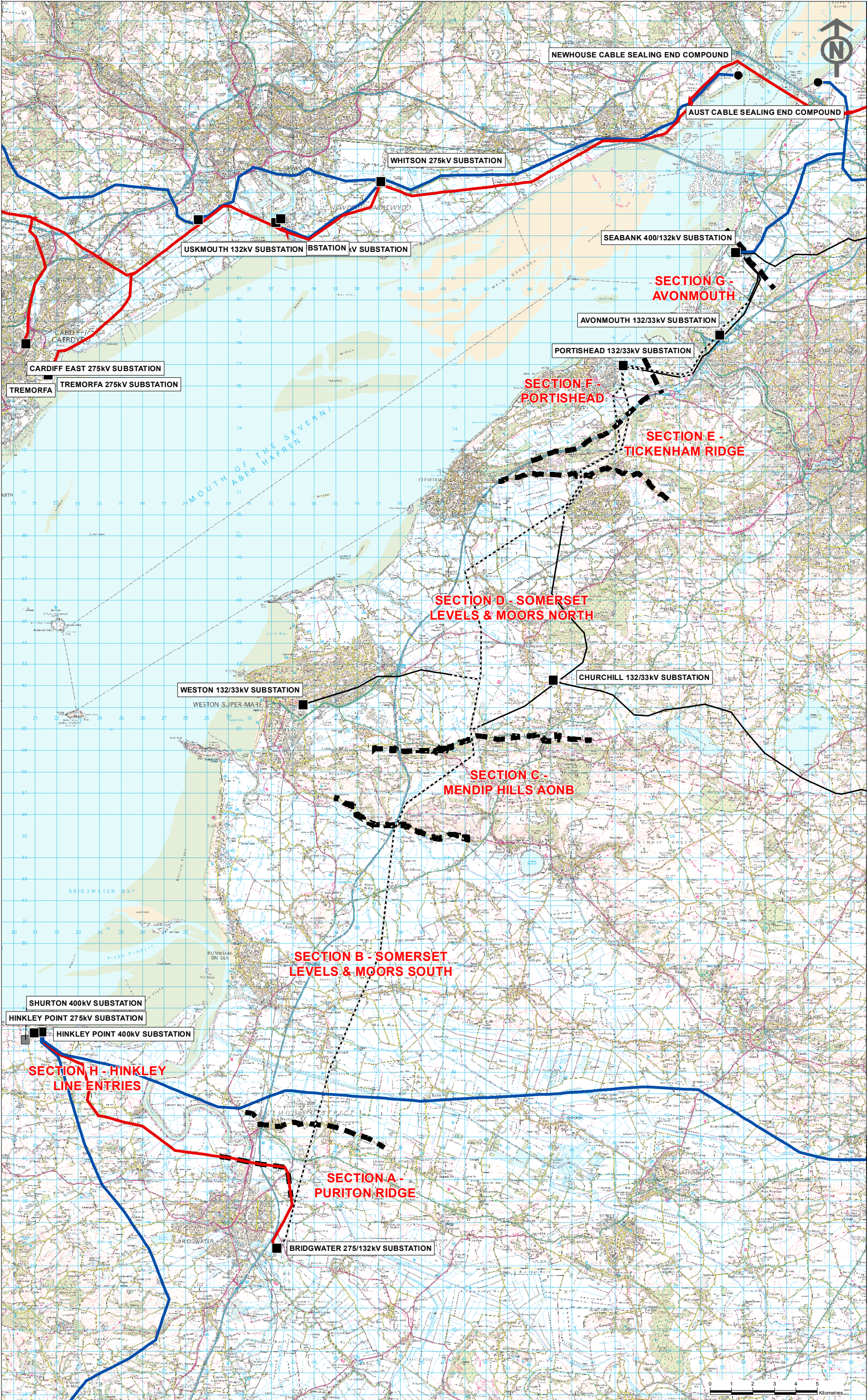
			
National Grid plc, Warwick Technology Park, Solihull CV35 9DA			
NG INVESTMENT No.	APPLICATION No.		GIS A3
20897	EN020001		
FIGURE No.	DRAWING No.	SCALE	
2.2	G1979.2415B	1:170,000	
			ISSUE
SHEET 1 OF 1			A

Figure 2.3 – Sections Considered in the Connections Options Report

SECTIONS CONSIDERED IN THE
CONNECTIONS OPTIONS REPORT



Key

Section Boundary

- Section Boundary

Existing Infrastructure

- Existing 400kV Overhead Line
- Existing 275kV Overhead Line
- Existing Western Power Distribution Overhead Line
- Existing Western Power Distribution 132kV Overhead Line for Removal
- Existing Substation
- Existing Cable Sealing End Compound

Consented Infrastructure

- Shurton 400kV Substation

Notes
This map includes data from the following sources:
- National Grid
- Ordnance Survey

This map is based upon Ordnance Survey material with the permission of Ordnance Survey on behalf of the Controller of Her Majesty's Stationery Office © Crown copyright. Unauthorised reproduction infringes Crown copyright and may lead to prosecution or civil proceedings. Licence No. 100024241 2014. Contains Ordnance Survey data © Crown copyright and database right 2014.

A	28/04/2014	DCO SUBMISSION	CB	CC	BC
ISSUE	DATE	COMMENTS	DRAW	CHKD	APP'D

Title

NATIONAL GRID (HINKLEY POINT C CONNECTION PROJECT)
ENVIRONMENTAL STATEMENT
VOLUME 5.2.3

SECTIONS CONSIDERED IN THE
CONNECTIONS OPTIONS REPORT

nationalgrid

National Grid plc, Warwick Technology Park, Solihull Rd, Warwick, CV35 9DA

NG INVESTMENT No.	APPLICATION No.	GIS A3
20897	EN020001	
FIGURE No.	DRAWING No.	SCALE 1:170,000
2.3	G1979.2416B	ISSUE A

SHEET 1 OF 1